

MARINE ENGINE MOUNT X



The MARINE X stainless steel [anti-vibration mounts](#) share the elastic properties of the AMC-MECANOCAUCHO type MARINE mounts, but with a greater anti-corrosion resistance. These antivibration mounts are made of stainless steel, allowing high corrosion resistance to chemical reagents (especially sulphuric acid) and marine atmosphere. It is a very common material in the food, paper and construction industries.

AMC Mecanocaucho® MARINE X Captive anti vibration mounts are anti vibration elements which work the rubber in shear and compression. Their architecture allow them to have stiffness par axis allowing reduced roll natural frequencies on engines.

AMC Mecanocaucho® MARINE X Captive mount is especially recommended for applications where vibration isolation is necessary, such as isolation of rotating or mobile machines that are continuously subjected to shocks, dripping oil or diesel or are exposed to the elements.

TECHNICAL CHARACTERISTICS

- The top metal hood protects the rubber from the Ozone, UV rays, diesel or oils which damage the rubber.
- The metal parts have a suitable anticorrosive treatment for outdoor applications. RoHs compliant.
- They have an interlocking metal component that provides a fail-safe protection for mobile applications. This device limits vertical movement when the mounting is submitted to shock inputs.
- The mounts are clearly identified, as the baseplates are engraved with the type and hardness, which makes it possible to easily recognise the part even after several years of use.
- The top cap has a cross shaped indentation which enhances rigidity on mobile applications and also permits oils or liquids to flow off the mounting.

APPLICATIONS

For use In mobile rotating machines that need maximum attenuation of vibration and noise, such as:

- Pumps
- Marine-Land units
- Mobile electrical panels
- Industrial vehicles





AMC MECANOCAUCHO
Industrialdea Zona A - Pab. 35.
Asteasu E-20159, Gipuzkoa
Spain



Tel.: +34 943 69 61 02
Fax: +34 943 69 62 19



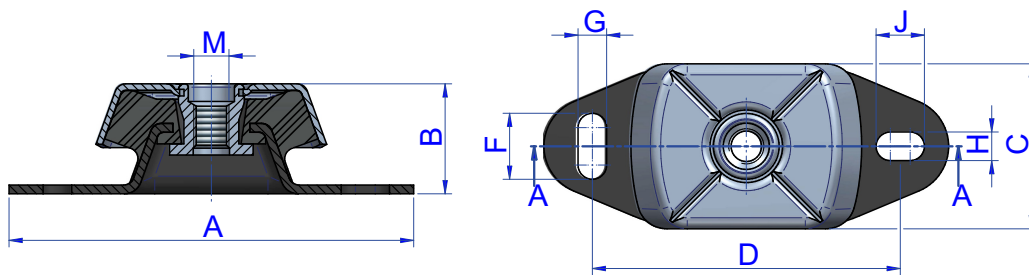
sales@amcsa.es



www.mecanocaucho.com
www.akustik.com

In order to adapt its products to the state of the art, AMC S.A. reserves the right to modify the conception and manufacture of the materials presented in this catalogue without prior notice.

DRAWINGS



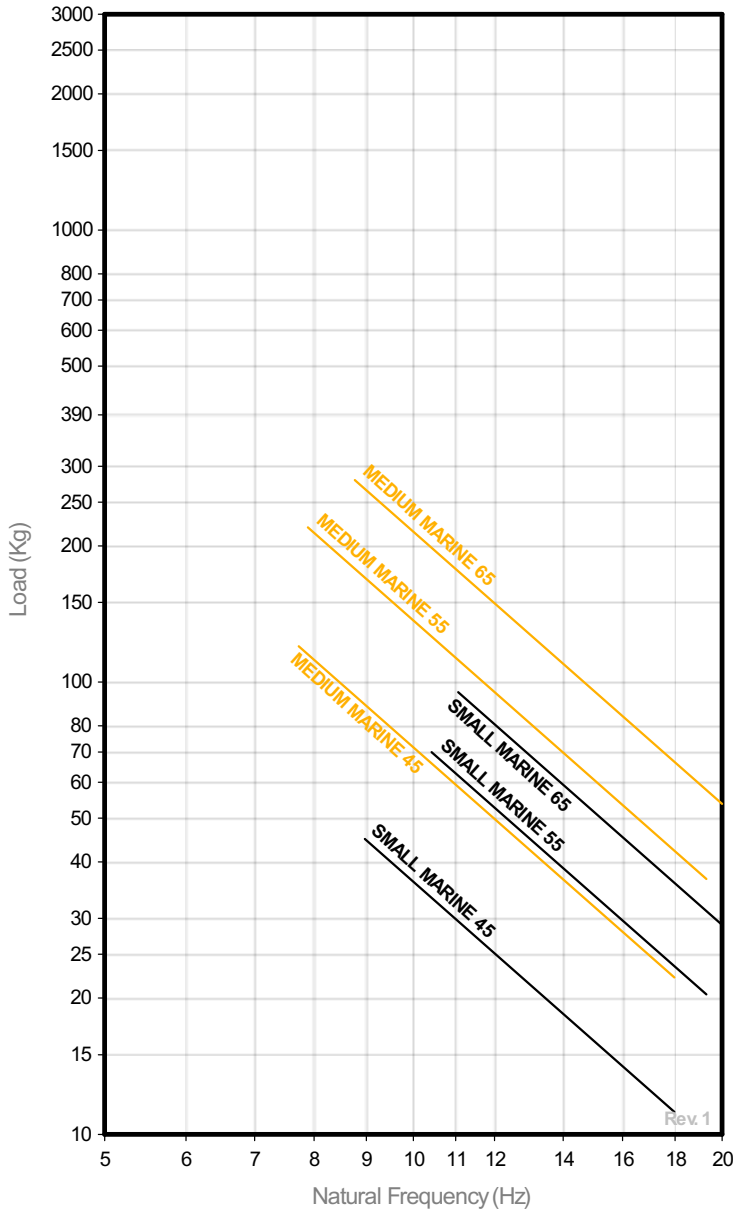
DIMENSIONS

Type	A (mm)	B (mm)	C (mm)	D (mm)	F (mm)	G (mm)	H (mm)	J (mm)	M	Weight (gr)	Shore	Load (kg)	Code
SMALL	120	40	60	100	14	11	14	11	M-12	397	45Sh	45	136216
											55Sh	70	136220
											65Sh	95	136217
MEDIUM	184	50	75	140	30	13	13	22	M-16	857	45Sh	120	136269
											55Sh	220	136277
											65Sh	280	136270

Elastical properties

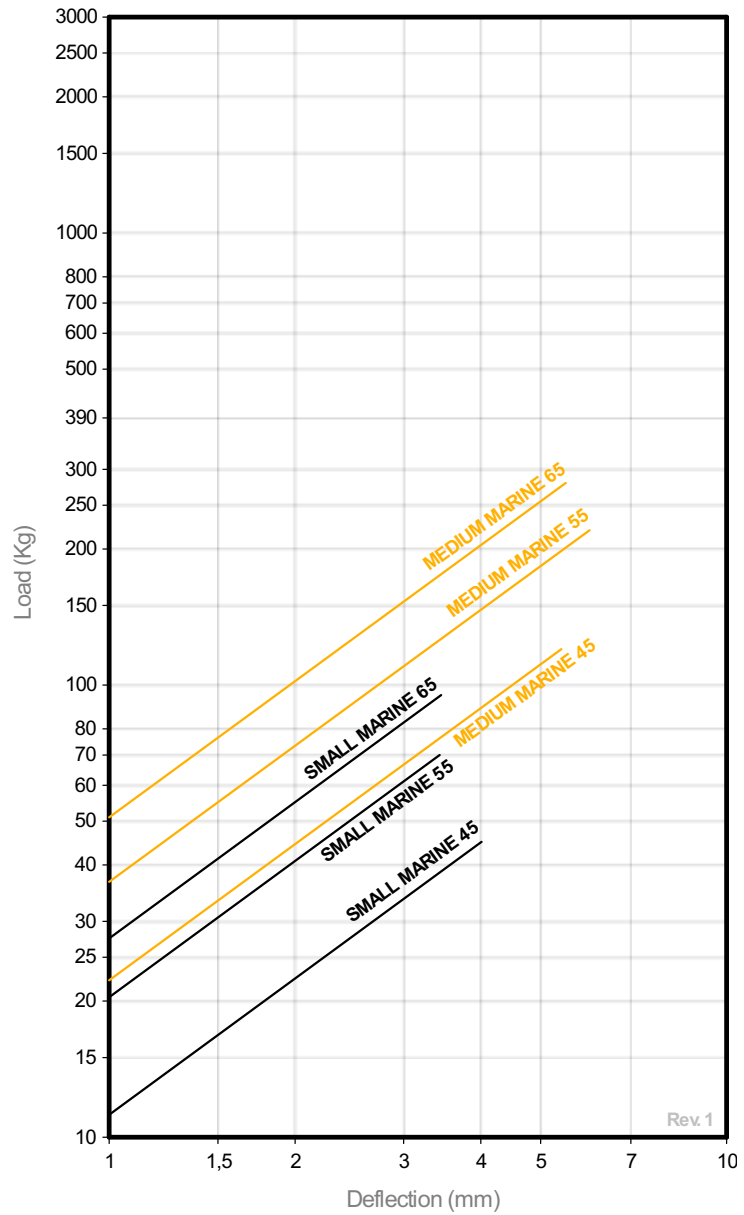
NATURAL FREQUENCY

AMC MECANOCAUCHO® MARINE X ENGINE MOUNT



LOAD DEFLECTION GRAPH

AMC MECANOCAUCHO® MARINE X ENGINE MOUNT



OPERATION AND ASSEMBLY



RECOMMENDATIONS FOR HOOD MOUNTS

The hood mounts should be installed between two parallel and perfectly flat surfaces. Mounts operating tilted or twisted do not work properly. This may be due to incorrect alignment, tolerances in the building of the chassis or over-tightened torque during the installation of the Antivibration mounts.

This applies to our marine-type, BSB, BRB or Mecanodamp mounts.

